

**Lake of the Isles Renovation Project
Citizens' Joint Review Committee**

Review and Recommendations

April, 2011

TABLE OF CONTENTS

Introduction	3
History	3
Committee Formation and Goal	4
Committee Review and Recommendations Process	4
Review Elements	
A. Topsoil Installation and Turf Renovations	5
B. Shoreline Plantings and Vegetation	
Part 1: Plant Height and Selection	6
Part 2: South Shore Plantings	8
Part 3: Shrub Beds	9
C. Light Poles	10
D. Trees	10
E. Park Benches	11
F. Grand Round Information Kiosk/Interpretive Panel	11
G. Gateway Intersection at E. Lake of the Isles Parkway and E. Calhoun Parkway	12
H. Miscellaneous Recommendations	13
Project Management and Oversight Issues	13
Final Recommendations	13
Lake of the Isles Citizens' Joint Review Committee	14
List of Appendices	15
Photo Archive	51

Lake of the Isles Renovation Project Citizens' Joint Review Committee

Introduction

Long considered a “crown jewel” in the Minneapolis Grand Rounds Park System, Lake of the Isles is a treasured cultural resource and an important part of the Chain of Lakes, which is visited by over two million people each year. The mission of this Committee is to assist the Minneapolis Park and Recreation Board (MPRB) in a final review of the Lake of the Isles Renovation Project, which began in 2001. Our objective is to ensure that this project, when truly completed, will live up to and honor the vision of its original planners, H.W.S. Cleveland, William Berry, Theodore Wirth and the Minneapolis Park Board:

“In the execution of this work, there is every evidence of the care, thoughtfulness, design, thoroughness of construction and progressiveness in the possible use of these properties by the general public.”

(Minneapolis Park Board, 1911)

In our role as advocates for Lake of the Isles Park we hope that the MPRB will work with us as a partner to ensure that this long-awaited renovation is successfully completed and meets the highest possible quality standards for a Regional Park in a manner consistent with the Minneapolis Park and Recreation Board’s Mission Statement:

“to permanently preserve, protect, maintain, improve, and enhance its natural resources, parkland, and recreational opportunities for current and future generations.”

History

Lake of the Isles is one of the few remaining examples of the Romantic Picturesque park prototypes constructed in the United States during the late 1880’s and early 1900’s and is characterized by sweeping lawns dotted with many mature deciduous trees and shrubs. This open, rolling landscape affords constantly changing vistas of the curving lakeshore juxtaposed with its densely wooded islands.

Planning for the renovation of Lake of the Isles Regional Park began in December 1995 as part of a long-term, comprehensive vision and effort to re-examine the Minneapolis Chain of Lakes “as both a cultural and natural resource.” Declining environmental conditions resulted in severe and prolonged flooding throughout the parklands at Lake of the Isles in the early and mid-1990’s. As part of this process, the MPRB called together representatives consisting of residents and park users to form a Citizens Advisory Committee (CAC). From 1997 to 1999, this 19-member committee

held 13 open meetings, working closely with MPRB staff, consultants, historians and regulatory agencies to create a conceptual plan for the renovation of Lake of the Isles Regional Park:

“...the challenge has been to create a sustainable as well as usable park space. Shoreline stabilization, wetland enhancement and restoration, path construction, upland plant restoration, and the elevation of passive recreation areas were strategies that needed to be implemented.

(MPRB Press Release, May 2009)

In 1999, a research study by Hess Roise & Company established that Lake of the Isles and adjacent Kenwood Park meet the criteria for listing in the National Register of Historic Places. (“*Historical Assessment: Lake of the Isles and Kenwood Park*”)

In order to preserve the integrity and consistency of Lake of the Isles Park as an historic landscape, MPRB entered into a Section 106 Programmatic Agreement in 2001 (the “Agreement”) with the U.S. Army Corps of Engineers (USACE) and the Minnesota State Historic Preservation Office (SHPO) that is part of the construction permit issued by the USACE for all restoration work on the parkland around the Lake. As stated in Appendix A, the broad Agreement with the USACE includes “vegetation, paths and other circulation, topography, vistas, furnishings (benches, light standards, etc.) and structures (i.e., bridges).” Elements of the project were expected to meet all guidelines as required by the U.S. Secretary of the Interior’s criteria for Historic and Cultural Landscapes as well as the National Register of Historic Places.

The permit also requires the MPRB to consult with and report to SHPO on a periodic basis regarding all phases of work to be performed and the result of such work. In addition, the permit requires opportunities for public comment on all phases of the plan.

Committee Formation and Goal

Recognizing that the neighborhoods surrounding Lake of the Isles Park played an active role in the development and implementation of the Concept Plan for the Renovation Project and have a special stake in its eventual success, this Citizens’ Joint Review Committee was formed in 2008. Representatives were formally designated from the East Isles, Lowry Hill, Kenwood-Isles and Cedar-Isles-Dean neighborhood associations to help ensure that the Project is completed in a manner consistent with the Master Plan, including the Programmatic Agreement. The Committee hopes to work with MPRB to achieve the goal of completing the Project in a satisfactory manner and to assure its successful, ongoing maintenance for the long term benefit of the neighborhoods, the City, and the Region and for the enjoyment of this outstanding public amenity by future generations of park and lake users.

Committee Review and Recommendations Process

The Committee has reviewed available documents and the current status of the various components of this Renovation Project and is making recommendations to,

and hopes to work with, MPRB's Commissioners and staff to achieve the goals set for the Project, namely:

"to balance aesthetics and the Park's historic integrity with the recreational needs of park users and the sustainability of a fragile environment." (MPRB Release, May 2009)

The Committee's review process was informed by primary source documents related to the Project including documentation from SHPO; USACE; MPRB; Sanders, Wacker & Bergly Inc., Landscape Architects & Planners (SWB); Notes and Minutes from the Lake of the Isles Citizens Advisory Committee (1997-1999), MPRB'S web site and Notes and Comments from citizens attending the public review meetings (June 2007).

Review Elements

Topsoil Installation and Turf Renovation

Background: The Citizens' Joint Review Committee would like to ensure that the turf areas around Lake of the Isles are viable and useable by the public for the historic purposes of passive citizen enjoyment and informal recreational activities, such as walking, jogging, biking, picnicking and enjoying the sun and panoramic views of the Lake.

Problems with the turf surface can be seen proceeding north around the Lake from the intersection of West 26th Street and East Lake of the Isles Parkway, including the north arm, west bay, and the south shoreline.

SHPO's 9/27/07 letter to the USACE noted that:

"the public comment on this project has included concerns about the unevenness of the ground surface of the restored turf in the surcharge areas. This surface may be important to historic recreational uses of these lawns, and this issue should be further assessed."

In response, the 11/16/07 letter from the MPRB stated that in addressing these concerns,

"the north arm and west bay ground surface was prepared for seeding this fall by using a vibrating aerator to fracture compacted soil in the areas that had some turf cover. Other areas were prepared by using a chisel plow to loosen soil that was compacted by construction traffic. In addition the soil has been amended to improve fertility."

The letter goes on to explain that a new method of seeding, *Terraseed*, was used everywhere turf is called for throughout the project area because it was believed to provide the "greatest potential for successful turf cover" and that "turf establishment will be evaluated in the spring and summer of 2008."

Issues: There has been public comment about the unevenness of the ground surface, which is hard and full of ridges in “restored” turf areas. The grass in the areas noted above is unevenly distributed and patchy, resulting in infestation of weeds in many areas. Furthermore, the paler green grass color appears inferior to the healthy grass growth in the East Isles part of the Park. It is clear that a sufficiently deep layer of good topsoil was not provided, and that the landfill trucked in from other sites was of inferior quality. Attempts at corrective action have not eliminated hydrologic pressure, which has continued to force rocks to the surface.

As noted in the 11/10/09 review letter from SHPO to the USACE,

"the re-establishment of the turf surface has been an important component of restoring the historic character and use of the open areas in the landscape. However, the project methods have produced an irregular ground surface in many areas. This condition affects both the appearance and usability of these areas, and should be addressed."

Citizens' Joint Review Committee Recommendations:

1. If the turf condition was evaluated in 2008, as stated it would be in the MPRB letter to SHPO (11-16-07), please share the results of that evaluation with this Committee.
2. MPRB should review and report on Rachel Contracting's performance to determine whether original project specifications/expectations/warranties for reseeded and renovating parkland turf were met. MPRB should consider withholding final payments to the contractor and/or other ways to address the failure to achieve satisfactory project outcomes. The end result for the turf should be equal to the quality of the turf at the large area south of W. 26th that was part of Phase 1.
3. MPRB staff, with SWB and this Committee, should develop strategies to resolve this problem and a timetable for implementation.
4. MPRB should review, evaluate and share with this committee how oversight roles and responsibilities were carried out for this critically important part of the Project and should require that deficiencies due to lack of oversight be corrected. SHPO's 11-10-09 letter to USACE provides evidence that the work was unsatisfactory and should be addressed.

Shoreline Plantings and Vegetation

Part 1: Plant Height and Selection

Background: The goal was to retain the historic character and vistas of the parkland while addressing the need to stabilize the shoreline and discourage geese from congregating in the park and on its paths. According to the Citizens Advisory Committee meeting notes (1998-99) and the MPRB Concept Plan and Fact Sheet (revised December, 1999), the intent was to employ a variety of “hard edge” and “soft edge” solutions and to develop “unique” solutions using a variety of vegetation. Further, the Fact Sheet stated that one of the specific planning and design objectives was that new vegetation not

screen views to the lake (2' - 3' maximum plant height). The following comments were made at various CAC public meetings:

“...build on the existing style of the lake, consistent but variety is appropriate...create plantings unique to Isles—something with romance, distinct views, a sense of mystery, a work of art...need low vegetation that doesn't impede views of the lake for homeowners and park users... plant for durability, variety, color, low maintenance.”

Issues: The selection and installation of Bankers Willow and Dwarf Arctic Willow included in the original Phase One shoreline plantings (in East Isles) as well as subsequent plantings at other locations around the Lake was a mistake. These varieties, though well suited to address shoreline stabilization and erosion control, characteristically reach a mature height of 4' - 6', which clearly exceeds project specifications and guidelines established by MPRB planners and the CAC. (See attached “Musser Forests Plant Specifications.”) In addition to blocking views and vistas for walkers, joggers, bench sitters, bikers and picnickers, these tall plantings obscure the very attractive varieties of sedge originally installed along the water's edge. At various locations around the Lake, primarily along the east shore, Bankers and Arctic Willow also encroach on the walking path.

As stated in SHPO's 9/27/07 letter:

“These tall plantings create a barrier between the parkland and the Lake, effectively block key views, and are not in keeping with the historic landscape character.”

The 9/27/07 SHPO letter also states:

“Our previous review comments (14 June 2002) on the shoreline protection plantings for the east shore stipulated that those plantings should be monitored to assess their suitability within the historic landscape and their general viability and heartiness. Those comments went on to state ‘the results of this monitoring may influence shoreline plans for subsequent phases of the project, and may suggest further modifications of the areas planted in this phase as well’. That monitoring did not occur as anticipated. Consequently, the subsequent shoreline protection plantings for the north arm and the west bay were installed (without review) with plantings similar to initial east shore work.”

Intending to address this problem, MPRB's 11/16/07 letter to SHPO states:

“Bi-mower will be used by park maintenance staff to mow the shoreline plantings” along all of the areas specified. “This procedure will be done each year in late June and again in August. The bi-mower trims the plants so that they are roughly knee high. The process has been added to the routine maintenance schedule for Lake of the Isles. MPRB project manager will monitor results of the maintenance procedure through 2010 and

provide an annual report to SHPO. Adjustments to the maintenance plan will be considered if the maintenance practices proposed here do not provide the desired outcome."

The decision to use a bi-mower for periodic trimming of shoreline plantings has been problematic, since the high speed rotary blade shreds the plant stalks and creates an unnatural, shoddy appearance. The only trimming during 2008 and 2009 occurred in late October when greatly overgrown shoreline plantings in East Isles were shredded to ground level, creating an unsightly mess. The shoreline plantings were not originally intended to require ongoing maintenance in perpetuity nor to incur additional expense. MPRB has been unable to conform to its stated maintenance procedures and schedules and has not submitted the required annual reports to SHPO.

SHPO's conclusion in its 11/10/09 letter was:

"The current periodic mowing scheme does not effectively address this issue as the tall vegetation is in place during a significant part of the warmer months. Removal and replacement of the tall plant material would appear to be the most sustainable solution."

Citizens' Joint Review Committee Recommendations:

1. As recommended by SHPO, all Bankers and Dwarf Arctic Willow should be removed from around the Lake as well as from the south shoreline of Kenilworth Lagoon. Until the plants are replaced, a regular schedule of trimming (not mowing, then shredding) should be maintained to keep existing shrubbery to a height of less than three feet.
2. As recommended by SHPO, these areas should be replanted with varieties that are consistent with a historic "picturesque" landscape aesthetic and project guidelines, which specified that mature height will not exceed 2' - 3'.
3. MPRB should review the selection of Bankers and Dwarf Arctic Willow to determine why inappropriate plantings were initially selected and then again used in subsequent phases of the Project, after inappropriate height was already evident. Please advise the Committee whether compensation for any expense of the above-required corrective actions can be sought from SWB.

Part 2: South Shore Plantings

Background: A second area of concern involves the south shore plantings: they are inconsistent with the Romantic Picturesque aesthetic and seem counter to the goal to restore the historic beauty of the lakeshore.

Issues: These plantings function as an unnecessarily wide, 30' - 40' barrier between the walking path and water's edge. No citizens were involved in planning for this section of the Park. In addition, many locations within this planting area are bare and exhibit little seasonal color variation. These aesthetically unattractive plantings seem inconsistent with the plantings around the rest of the Lake and conflict with the historic style of the Lake. This area was deliberately burned in 2009.

The following comments are from an early internal MPRB staff planning document that identifies the Public's general, universal, and continuing concerns about the appearance of "native" plantings to be used on the Lake's shorelines:

"Most if not all of the attendees at the meetings and subsequent public hearings did not want to see a complete reversal to cattail, marsh type landscape...They did not want to see anything too high or too weedy."

Citizens' Joint Review Committee Recommendation:

1. With SHPO and an outside landscape consultant, MPRB should evaluate the appearance of the south shoreline plantings and develop a new plan to better achieve the goal of balancing the aesthetics and historic integrity with the issue of shoreline protection and sustainability goals.
2. Consideration should be given to returning a much wider section of this area adjacent to the shoreline to soft, rolling turf, requiring only periodic mowing.
3. MPRB should provide the Committee with their assessment as to how best to address this issue as well as a timetable for implementation.

Part 3: Shrub Beds

Background: In 2008, Rachel Contracting planted eight shrub beds around the Lake and one at the East Isles gateway. Planting was done in 90-degree weather without an adequate watering program in place, resulting in many heat-stressed and dead plants.

Issues: Rachel Contracting is under contract to perform periodic pruning, watering and weeding. In 2009, a Committee member had to contact Rachel Contracting directly to perform these duties. Furthermore, spring 2010 growth revealed serious weed infestation in most beds, with no evidence of any maintenance work. Ongoing maintenance and replacement of dead shrubs has occurred on a random basis resulting in distorted plant profiles and empty spaces at most locations. It also appears that the quantity and variety of plants may not conform to the 2007 SWB planting plan.

Citizens' Joint Review Committee Recommendations:

1. The committee requests that MPRB inventory the shrubs at each shrub bed location to determine the extent to which current plantings conform to the quantity, variety and massing in the original SWB 2007 master landscape plan. Where inconsistencies with the master plan are identified, please update the committee regarding plans for corrective action.
2. MPRB should utilize contract warranties that require contractors to replace all dead or declining plants, to conform the quantity and variety of plants to the 2007 SWB plan and to strictly abide by terms and conditions of their planting plans and maintenance contracts.

3. MPRB should establish and implement an ongoing maintenance plan for pruning, watering and weeding. These beds should be maintained in the same beautiful way MPRB maintains the beds in other locations, such as Dean Parkway and the Lake Harriet Rose and Peace gardens.

Light Poles (Parkway/Intersections/Skating Rink)

Background: The existing contemporary-style (“ice cube”) light poles date from the 1970’s when the parkway around the Lake was totally redesigned. Starting in 2007, Victorian-style poles are gradually being installed to replace the cube style. Also, extremely tall, permanent, industrial, parking lot-style light poles were installed by the skating rink, without notice or public input and, while utilitarian, are obviously inconsistent with the aesthetics of the Park.

Issues: The mix of light post styles is a hodgepodge.

Citizens’ Joint Review Committee Recommendation:

As the Project enters its final phase, MPRB should give the highest priority to completing installation of the Victorian-style lights as soon as possible, ensuring continuity of style around the entire Lake of the Isles Parkway.

Trees

Background: It is our understanding that the original planting schedule for new trees around Lake of the Isles called for 125 trees to be planted in the Spring of 2008 and 288 trees in the Spring of 2009, for a total of 413 trees. Also, in various spots throughout the formerly flooded park area, primarily along the outer periphery of the parkland, a number of deep indentations (“tree wells”) were deliberately created during the heavy trucking phase of the restoration in order to preserve valuable mature trees that had survived the earlier flooding.

Issues: MPRB recognizes that the tree planting is not yet complete and will be an ongoing process. As to the tree wells, they are inconsistent with the historic landscape of LOI parkland. While no one disputed the importance of preserving these older trees, citizens’ understanding from conversations with park planners and managers and SHPO staff is that when these older trees are no longer thriving and therefore require replacement, MPRB will fill the related “well” areas to level out the park’s topography.

Citizens’ Joint Review Committee Recommendation:

1. The committee requests that MPRB (Forestry) review and report on the status of the tree plantings with reference to the number and variety of trees specified in the Master planting plan.
2. The committee requests that MPRB share its plans for replacement of diseased and dead trees and removal of tree stumps going forward.

3. Please confirm the committee's understanding that where tree wells exist, they will be leveled out when replacement trees are planted so that eventually all the LOI parkland tree wells will be eliminated. Please also confirm that this intention and directive is recorded in planning documents that will guide MPRB Forestry staff into the future.

Park Benches

Background: There are currently 39 park benches located around Lake of the Isles. Of this total, 32 are dedicated or memorial benches paid for by private donations. An additional seven empty concrete slabs are available if the Foundation for Minneapolis Parks receives additional donations. Some empty slabs have been in place for several years. In 2009, the cost to reserve a memorial bench was doubled and an additional \$500 annual maintenance fee was initiated.

Issues: The locations of ten benches and of two concrete slabs for future benches have obstructed views due to tall shoreline plantings or poor placement. Other locations with dramatic panoramic views have no benches or slabs. The benches are irregularly spaced, and some areas on the west and south sides have no benches for quite a distance. A few of the empty slabs are cracked, unusable and unsightly.

Citizens' Joint Review Committee Recommendations:

1. Review existing bench and slab locations, noting existing locations with obstructed views. Some views can be opened up by replacing excessively tall plantings as previously discussed. Develop plan to relocate some benches to spots with more panoramic views when funding is available.
2. Evaluate bench spacing, especially on the west and south sides of the Lake, to identify additional bench locations if needed to comply with any MPRB spacing guidelines.
3. Remove any unusable cement slabs and replace them with sod.
4. Discuss a timetable for installing benches on the remaining empty slabs, funded by either memorial contributions or MPRB.

Grand Rounds Information Kiosk and LOI Interpretive Panel

Background: MPRB erected an information kiosk on the west side near the northwest tip of the Lake between the walking path and biking path (the north arm),

Issues: The location of this kiosk is inconsistent with that shown on the MPRB's own Grand Rounds system-wide information maps and it was suddenly installed without opportunity for public comment. No residents or community advisory groups ever envisioned it at this current location. The current location is not where most walkers and bikers would seek directions, and its installation required a large expanse of additional concrete accompanied by an impervious asphalt pathway in a relatively narrow section of the parkland. Immediately upon installation the "street

address” lettering along the top edges of the roof drooped and peeled, resulting in its present shabby and deteriorated appearance. The empty, fourth side of the kiosk is used as a temporary bulletin board, with unsightly postings. The location offers no natural screening (trees or other plantings), emphasizing the kiosk’s unsightliness.

Citizens’ Joint Review Committee Recommendations:

1. Ideally, to the extent feasible, the kiosk should be located where specified on the Grand Rounds system-wide information maps: at the Lake near the intersection of Kenwood Parkway and Lake of the Isles Parkway.
2. Wherever the kiosk is located, plant trees and/or bushes nearby to provide natural screening.
3. As noted in SHPO’s 11/10/09 letter, “stipulation #5 of the agreement requires an interpretive plan. This plan needs to be completed.” We understand that planning for this panel is well on its way and involves the placement not only of a panel on the empty side of the kiosk but also freestanding panels in other locations around the Lake. Consultation with the public, including this committee, and SHPO will be needed regarding design and content prior to installation of interpretive panels.
4. Either remove the peeling lettering or affix it neatly and permanently.

Gateway Intersection at East Lake of the Isles Parkway and East Calhoun Parkway

Background: The aesthetics of this primary gateway entrance area to the Park are very important. (*Fact Sheet: Lake of the Isles Regional Park Concept Plan 12/1999*)

Issues: The highly visible positioning of the unattractive portable toilets (with entry doors in clear view) near the Midtown Greenway connection is inconsistent with the original Concept Plan for the LOI Restoration Project, as well as being inconsistent with MPRB’s usual practice of effectively screening such facilities. Here, the wood “screen” is behind the toilets. The other minor improvements suggested below would dramatically improve the feeling one gets when approaching the Gateway intersection by imparting a sense of thoughtful and unified planning with minimal expense.

Citizens’ Joint Review Committee Recommendations:

1. Apply the MPRB’s usual standards to the positioning and screening of the portable toilets.
2. Enhancing the entry sign area at this Gateway intersection with colorful annual flowering plants in front of it, and appropriate landscaping behind it, as is routinely done for many other park entry signs, would be a wonderful improvement. To make this work, slight repositioning of the Lake of the Isles entrance sign to the east (where it was originally located and as shown on SWB’s 2007 plan, so it is in the center of the gateway vista when entering the Parkway), and the One Way sign slightly to the west of its current location, would be needed.

Miscellaneous Recommendations

1. **Tuckpoint Bridges:** Complete tuck-pointing on Channel and Kenilworth Bridges. It is reported as 60% completed for the Channel Bridge and 80% completed at the Kenilworth Bridge.
2. **Trash Receptacles:** Newly painted trash cans replaced rusting ones in 2010, a big improvement. However, there are much more attractive, covered trash can styles at the Lake Harriet Rose Garden and Bandshell that, if funding was available, would be an improvement for LOI. Until such time, if possible, consider more suitable size and color liners for the cans.
3. **Signage:** Review all signs around the Lake, including but not limited to traffic, pedestrian crossing and “Deep Water” signs, for necessity, location and appearance.

Project Management and Oversight Issues

Thanks to the investment of local, regional and State funds over an extended period of time, MPRB has accomplished vast improvements to Lake of the Isles Park, and this Committee greatly appreciates the efforts and resources put forth. This report is intended to identify unresolved issues and provide support for corrections and enhancements needed to complete the renovation of the Park, consistent with the objectives of the Project and the highest aesthetic standards for Lake of the Isles, a “jewel” of the Chain of Lakes and a showcase for millions of visitors to the Twin Cities.

In the course of compiling this report, it became evident that a lack of continuity in MPRB project management contributed to the problems described in this document. During the eight-year renovation period, four different individuals (including two just since 2007) have managed this project. Some project managers had extensive additional responsibilities for other projects proceeding simultaneously. Also, we do not know whether RFP documents and specifications were adequate to accurately implement the provisions of the Agreement with the USACE. For these and/or other reasons, it appears that the various project managers could not adequately exercise proper management oversight.

In addition, ongoing, regularly scheduled communication with the various interested parties, including SHPO and the public, was lacking. MPRB did not consistently follow the Project guidelines that required periodic reviews and status reports to SHPO. If these review and report steps had occurred, some of the problems identified in this Committee’s report could have been avoided. Unfortunately, additional expense will now be required to rectify some of these mistakes.

Final Recommendations

- Work with MPRB Commissioners, members of this Committee, and others to review this report and respond with plans to address the issues identified herein (including seeking compensation from or enforcing warranties of Project contractors, if appropriate);

- Establish a regular communication schedule with SHPO and the USACE to ensure that the issues identified in this report will be resolved in a manner consistent with previous citizen input, SHPO guidelines and the Programmatic 106 Agreement;
- Establish a formal management and maintenance program to ensure ongoing maintenance of the Park at the highest standards in the future;
- Establish a schedule for ongoing communication with neighborhood associations around the Lake to seek input and to report on plans and accomplishments.
- Identify local resources that could conduct a comprehensive review of Lake of the Isles and the other parts of the Chain of Lakes, to assist in setting uniform and historically sensitive standards of quality for the entire Chain of Lakes, including aesthetic and environmental issues. SHPO staff and the 1999 LOI historic analysis report could provide a comprehensive inventory that could be helpful in this endeavor.

Lake of the Isles

Citizens' Joint Review Committee

Cedar-Isles-Dean Neighborhood Association:	Art Higginbotham
East Isles Residents Association:	Harvey Ettinger
Kenwood Isles Area Association:	Kathy Low, Pat Scott
Lowry Hill Neighborhood Association	Marty Broan

List of Appendices

- Lake of the Isles Park Renovation Project:**
Formation of Citizens' Joint Review Committee (Fall 2008)
- Lake of the Isles Citizen Advisory Committee:** Meeting Notes (January, 1998)
- Lake of the Isles: MPRB Internal Planning Document** (Unsigned, undated)
- Historical Assessment: Lake of the Isles & Kenwood Park:**
Presentation by Charlene Roise, Hess Roise & Company, (September 16, 1999)
- Programmatic 106 Agreement Among the U.S. Army Corps of Engineers, the Minnesota State Historic Preservation Officer, and the Minneapolis Park & Recreation Board regarding the Lake of the Isles Renovation Project, Minneapolis, Minnesota** (May 2001)
- MPRB Fact Sheet: Lake of the Isles Regional Park Concept Plan** (Revised 12-1999)
- SHPO Letter Cliff Swenson (MPRB)** (January 11, 2002)
- Lake of the Isles Site Improvements Planting Plan:**
Sanders, Wacker, Bergly: East Isles Gateway (entry signage/plantings) (April 30, 2007)
- Mussers Forests Plant Index: Dwarf Bankers Willow** (July 5, 2007)
- E-mail from Deb Boyd to Joe Yanta** (July 13, 2007)
- Letter from SHPO to Joe Yanta, Regulatory Branch, U.S. Army Corps of Engineers**
Lake of the Isles Renovation Project, Minneapolis, Hennepin County, SHPD #1999-3677PA (September 27, 2007)
- Letter from Deborah Boyd, Project Manager, Minneapolis Parks and Recreation Board, to Mr. Dennis Gimmestad, Government Programs & Compliance Officer, Minnesota Historical Society, State Historic Preservation Office RE: Lake of the Isles Park** (November 16, 2007)
- Map: Lake of the Isles Rehabilitation Phasing Plan:**
Sanders, Wacker, Bergly (March 14, 2008)
- MPRB Press Release: Lake of the Isles Project Update** (May 2009)
- Final Letter (SHPO #1999-3677PA): Re: Lake of the Isles Renovation Project,**
From: **State Historic Preservation Office** (Britta Bloomberg, Deputy Director)
To: **U.S. Army Corps of Engineers Regulatory Branch,** (Joe Yanta: Director)
Cc: **Minneapolis Park & Recreation Board** (J. Rietkirk: Director)
Minneapolis Heritage Preservation Committee (J. Byers) (December 30, 2009)
- Letter from Larry Wacker (SWB) to Andy Lesch (MPRB)** (June 25, 2010)

LAKE OF THE ISLES PARK RESTORATION PROJECT
(2001-2009)

FORMATION
of
CITIZENS JOINT REVIEW COMMITTEE

WHEREAS, the neighborhoods surrounding Lake of the Isles have played an active role in the development and implementation of the Master Plan for the Lake of the Isles Park Restoration Project (Citizens Advisory Committee 1997-99; continued citizen activity since that time) and have a special stake in the eventual success of this important project;

THEREFORE, the East Isles, Lowry Hill, Kenwood, and Cedar-Isles-Dean neighborhood associations are forming an ad-hoc joint committee to help to ensure that the Project is brought to completion in a manner consistent with the revised Master Plan, including aspects of the project covered by the Section 105 Memorandum of Agreement signed by the Minneapolis Park and Recreation Board (MPRB), the US Army Corps of Engineers (USAC), and the Minnesota State Historical Preservation Office (MNSHPO) as part of the permitting process that began in 2001.

The Joint Committee, acting at the direction of their respective neighborhood associations, will review the current status of the various components of the project as it nears its final phases of completion in 2008-09. Based upon their review and assessment, the Committee plans to meet with, make recommendations to, and work with the MPRB—its commissioners and staff—to achieve the goal of completing the Project in a satisfactory manner and to assure its successful, ongoing maintenance for the long term benefit of the neighborhoods, the City, and the Region; and for the enjoyment of future generations of Park and Lake users of this outstanding public amenity.

This document was formally voted on and approved by the The Board of Directors of the East Isles, Lowry Hill, Cedar-Isles-Dean, and Kenwood Neighborhood Associations (Nov-Dec 2008).

Designees to CITIZENS JOINT REVIEW COMMITTEE
LAKE OF THE ISLES PARK RESTORATION PROJECT

EIRA:	Harvey Ettinger
KIAA:	Kathy Low/Pat Scott
LHRA:	Marty Broan/Anita Tabb
CIDNA:	Art Higgenbotham

* Please contact Harvey Ettinger (hgetting@aol.com)[612-374-4939] if you have any questions or concerns regarding the Lake of the Isles Park Restoration Project

Lake of the Isles Citizen Advisory Committee Meeting Notes from 8 January 1998

Bob Williams - gave a quick review of the differences between the landscape styles of Simple (mowed grass, lean lines, little variety) and Romantic (more rugged, greater variety, vistas, riparian edges, classical). The Committee is in favor of the Romantic Picturesque approach for Isles.

Larry Wacker - Power Point presentation on issues of Vegetation, Shoreline Aesthetics & Stabilization, Water Quality, Lake & Lagoon Treatments, Island Treatments, Built Facilities, Recreation, Focal Points, Unattractive Structures, Bike Traffic, Pedestrian Traffic, Auto Traffic. See handouts.

Committee Comments/Discussion of Goals:

→ plant for durability, variety, color, low-maintenance, and to discourage geese
phase in the plan, create a list of priorities & do the basics first
retain existing trees - work around them, plan for demise - phase in replacements
keep what we have

build on existing style of lake - consistent but varied
adjacent house lawns provide enough 'Simple' landscaping - Romantic is appropriate for lake
→ need low vegetation that doesn't impede view of lake edge for homeowners and park users

'Simple' landscaping would be less expensive to install but more expensive in the future because of mowing, shoreline failure, etc.

'Romantic' landscaping would be more expensive to install but less expensive in the long run - less mowing, shorelines stabilized, greater variety of plant material.

solutions should be permanent - no stop-gap approaches
there is no single solution that could be applied to the entire lake shore - a wide variety of approaches to address different conditions

Mary Lerman, MPRB Horticulturist - update on north arm plantings - the MPRB has → \$45,000 (from two foundations) for native plantings along the arm. plants were grown for the project, however, flooding prevented implementation. the site had one application of Rodeo to annihilate the reed canary grass before the flooding. the grass usually needs 2 or 3 treatments to kill it. canary grass grows from a rhizome mass that is usually 5 to 6 inches deep/thick so disturbing the soil for planting (tilling) is not necessarily a good idea. the proposed planting along the shore consisted of 30 - 40 varieties of wildflower species as well as sedges, blueflag irises and arrowheads. possibility of planting in textural mounds - mass plantings/drifts of single species. moist prairie plants were chosen for space between paths.

Committee comments contd.:

not everyone on the committee agreed with idea for wet prairie between the paths on north arm (some suggestions for filling and turf grass)

Notes from 8 JAN 98 Isles meeting
h:\docs\meetings\isles\amary3.doc

possibility of planting natives below the flood-line at 147.2 and do turf/lawn above it

there was consensus to remove buckthorn from the Islands

need to allow selective filling to enable picnicking and seating spaces (DRY LAND)

the north arm requires something dramatic to fix it
emphasize this space as an entrance, view from motor vehicle is important but don't make the space too auto-friendly

explore the possibility of extending the lake into Kenwood park to gain capacity for flood storage. dredging at Kenwood would enable us fill in other locations along the lake and would also be a means to 'bridge' the parkway. tennis courts and ballfields may be sacred cows.

→ create plantings unique to Isles - something with romance, distinct views, sense of mystery, a work of art - have users search out uniqueness

do not allow human access to the islands (no bridge)

cook the geese and distribute to shelters

because the majority of the soil is peat and muck (highly organic) it is decaying and therefore also sinking (the paths are NOT sinking)

need to assess the boardwalks - are they appropriate? need something more aesthetically pleasing, something that isn't a 'stopgap' measure, better look when the land is dry adjacent to the boardwalks

minimize the litter (esp. cigarettes) coming through the grit chambers, sewer system, etc.

need to address alluvial fans created at outlets (remove the 'fill' on a regular basis?)

explore options by degrees (minimum on up . . .)

potential to expand the Kenilworth Lagoon for additional storage

explore the option of creating a third island near the northern point

don't put a footpath in along the channel to Cedar, need to change this hard shoreline to one with soft edges

✓ explore both permanent and seasonal solutions for the skating facility

→ screening structures are needed for portapotties

keep the canoe racks however, the northend racks are difficult to access, sharp drop to water - not good for kids, have to 'portage' to store canoe

make the soccer field more usable or use it for flood storage space/wetland
does the maintenance facility need to be at the southend? could this space be used for recreational purposes - a playing field perhaps?

keep water fountains/pumps

✓ lighting is ugly - need lighting fixtures that are more appropriate in style - classical

culverts - softer/bio-engineered approach, new foot bridge too

explore options of combined use paths, alternate surfaces, path edges/borders, address ADA concerns

yes to connections with Midtown Greenway, Kenilworth, Cedar Lake/Dean Parkway

Franklin Ave - need to improve access from Park to Lake, reduce auto dominance - what does the Traffic Calming Committee say? [Final meeting of TCC is February 14 and their recommendations go the Board on the 15th.]

The consultants will provide a more concise list of proposed goals based on the discussion.

Steve Apfelbaum (consultant ecologist) was not at the meeting due to snow/whiteout conditions in Wisconsin, he'll bring slides to next meeting of low vegetation appropriate for riparian edges.

MSPS
Internal Document
6-1-2000

Lake of the Isles

Project: Lake of the Isles

Budget: 175,000 Lowry Hill East NRP
375,000 East Isles NRP
500,000 LCMR Environmental Fund (250,000, 250,000)
750,000 LCMR Met Council
1,000,000 Met Council 2000? 531,000 + 469,000
(2000) (2001)
LCMR

Consultants: Sanders Wacker Bergly
Larry Wacker and Bill Sanders 651.221.0401
SEH, Engineers
Bentz Thompson Rietow, Architects

Community contacts: Jeff McNaught, Chairperson
Leon Lange, East Isles
Lars Peterson, East Isles
Dennis Tuthill, Lowry Hill East

Overview: building on the concept plan, the consultant have been retained to begin more detailed analysis and inventory of potential project area. To date there have been two meetings held with all of the consultants to discuss process and schedules. SHE will be submitting to SWB estimates for survey work (soil and topographic) as well as graphic imaging, if required. The intent of the work is to prepare a more detailed project proposal for neighborhood consideration and to determine more precise cost estimating and regulatory agency involvement. Due to the desire to create more compensatory water storage and provide more stable fill soils for relocated recreational facilities (including pathways) the entire lakeshore treatments proposals must be considered in their entirety. This will help facilitate permitting and determining priorities. We have promised the citizen advisory committee that we would reconvene meeting with them to help decide priorities and whether some of the projects proposed in the concept plan - most specifically the use of Kenwood and/or the soccer field in the southwest corner of the park as comp. Storage areas would be pursued. Other potential issues are the bridge at Franklin and the location of a permanent skating rink - although most felt this facility should stay where it is but perhaps should be a permanent skating/picnic pavilion type structure.

Preliminary discussions have also suggested that we do an Environmental Assessment Work Sheet which might offset a number of concerns and opposition to various proposals.

Issues: Natural shoreline treatment. Most if not all of the attendees at the meetings and subsequent public hearings did not want to see a complete reversal to a cattail/marsh type landscape. The design team suggested a variety of treatments including vegetation, walls and/or a combination of both. They did not want to see anything too high (preferred less

than knee high) nor too weedy. I am concerned that the recent plantings on the east side of the lake (the Bassinett planting via horticulture) is exactly what they don't want to see happen.

Other issues: Maintenance will need to have some facility to replace the existing if the area is developed according to the concept plan. Can't forget to include an inventory of buildings and functions that presently occur at the site.

Kenilworth Lagoon: There are a group of individuals who have raised private dollars to implement some of the shoreline restoration concepts on the north side of the lagoon. I have met with them with Larry Wacker and Marylyn to talk about the items they wish to include in the scope of the work. Jeff Lee has DNR money to help match the private funds. We have suggested the removal of dead or declining vegetation and buckthorn; reshaping the banks and filling in some low lying turf areas where ruts and depressions are trapping water; replanting with native wetland plants and some canopy trees; adding a canoe landing and a few benches. They would like to have this work done yet this summer. Larry was going to fold the necessary survey work into the overall survey to be done and do the drawings and bid the project. **UNDER NO CIRCUMSTANCES SHOULD THE LANDSCAPING BE DONE IN-HOUSE. THE PLANTING SHOULD BE BID WITH A THREE YEAR MAINTENANCE/GUARANTEE IN THE MANNER DESCRIBED BY THE CONSULTANTS.**

HISTORICAL ASSESSMENT: LAKE OF THE ISLES AND KENWOOD PARK

Presentation by Charlene Roise, Hess Roise and Company, September 16, 1999

Brief History of Lake of the Isles and Kenwood Park

History is more than a simple chronology. We must look at the context in which a property (buildings and/or landscapes) was created and has evolved. For Lake of the Isles and Kenwood Park, the contexts include the history of the Minneapolis Park Board, development of the Grand Rounds, and the growth of Minneapolis.

The Minneapolis Park Board was established in 1883. One of its first acts was to hire **Horace Cleveland**, a nationally prominent landscape architect, to help plan the park system. Cleveland stressed the need to look the park system as whole, create a master plan, and acquire needed property as soon as possible. **He favored the picturesque aesthetic.** He proposed a series of parks and parkways some twenty miles long encircling Minneapolis, with none more than two miles from downtown. By 1891, the city's boundaries had grown and the park board's vision had grown as well, the circular park system had expanded to over fifty miles and was christened "The Grand Rounds."

The Minneapolis Park Board acquired Lake of the Isles in 1886-1887. The first phase of dredging was from 1889 to 1893. Two of the lake's four islands were incorporated into the south shore. No further improvements were made until 1906 when Theodore Wirth became superintendent. The second phase of dredging and filling occurred from 1907 to 1911. The lagoons were created, bridges built, and the islands somewhat enlarged. Also, land for Kenwood Park was acquired in 1907 and the park was subsequently developed. By 1911 the lake had taken the shape it has today. There were few changes in the lake's appearance until the Eckbo plan in the 1970s. Kenwood Park also maintains good historic integrity.

The residences around the lake are an important element of the lake's character. Residential development was limited in the nineteenth century. A big building boom occurred in the first three decades of the twentieth century, by 1930, most of the residences were in place.

The Section 106 Process

The National Historic Preservation Act of 1966 required every state to establish a State Historic Preservation Office (SHPO). Section 106 of the act directs federal agencies to consider the effects of their actions on historic properties—so anything funded or licensed by the federal government (such as a Corps of Engineers permit) triggers Section 106 review. Properties are considered historic if they are eligible for the National Register of Historic Places. Individual properties or historic districts can qualify for the National Register if they meet one of four criteria:

- A. association with events important to broad patterns of history,
- B. association with the life of an important person,

- C. representing a type, period, or method of construction; or the work of a master; or expressing high artistic values; or
- D. yielding, or likely to yield, information important in prehistory or history.

Above-ground properties usually qualify under Criterion A for a significant association with important events or development trends, or under Criterion C for innovative engineering, design by an important architect, or exceptional aesthetic characteristics. The Grand Rounds also might qualify under Criterion B for its association with Theodore Wirth.

Properties must also retain sufficient physical integrity of significant, character-defining features

Properties can be officially listed in the National Register or determined eligible for listing by a federal agency or the SHPO. Section 106 applies in either case.

National Register designation is different from local landmark designation by the Minneapolis Heritage Preservation Commission. Local designation requires an owner of an historic property to go through a design review process if alterations to the property are proposed. National Register status is primarily honorary. It must only be considered in project planning when the project has federal involvement. Otherwise, the owner of a National Register property is free to alter or demolish the property.

Lake of the Isles and Kenwood Park appear to meet Criterion A and Criterion C, and perhaps Criterion B. The integrity of these properties is good. Therefore, the lake and park appear to qualify for the National Register.

As part of the Section 106 process, the effects of the proposed project must be assessed. The project can have "no effect," "no adverse effect," or an "adverse effect." If the historic properties are not physically or visually affected by the project, there is no effect. If the project affects historic properties but any changes conform to the Secretary of the Interior's "Standards," there is no adverse effect. The "Standards" identify four "treatments": preservation (maintaining a well-preserved property), rehabilitation (sensitively adapting the property to meet new needs), restoration (replacing original elements that have been lost over time), and reconstruction (completely recreating a property that is no longer extant).

A proposed project has an adverse effect when the project will damage significant characteristics of an historic property. The project should be reassessed to consider alternatives that would not have an adverse effect. If adverse effects cannot be avoided, mitigation is required. Examples of possible mitigation strategies are documenting the property before it is altered, developing some form of historical interpretation (signs, pamphlets, etc.), and restoring other historic properties.

**PROGRAMMATIC AGREEMENT
AMONG
THE U.S. ARMY CORPS OF ENGINEERS,
THE MINNESOTA STATE HISTORIC PRESERVATION OFFICER,
AND THE
MINNEAPOLIS PARK AND RECREATION BOARD
REGARDING THE
LAKE OF THE ISLES RENOVATION PROJECT,
MINNEAPOLIS, MINNESOTA**

WHEREAS, the U.S. Army Corps of Engineers (Corps) is proposing to grant a Section 404 permit to the Minneapolis Park and Recreation Board (MPRB) for the initial stage of the Lake of the Isles Renovation Project (Project); and

WHEREAS, the Project will be completed in phases over several years; and

WHEREAS, the Corps has determined that the Project will have an effect upon the Lake of the Isles Chain of Lakes Regional Park, a property which meets the criteria of the National Register of Historic Places as a component part of The Grand Rounds, and has consulted with the Minnesota State Historic Preservation Officer (MnSHPO) and the Minneapolis Park and Recreation Board (MPRB) pursuant to 36 CFR 800.3; and

WHEREAS, the MPRB has participated in the consultation and has been invited to be a signatory to this agreement pursuant to 36 CFR 800.6(c)(2); and

WHEREAS, the Minneapolis Heritage Preservation Commission (MHPC) has participated in this consultation and has been invited to concur with this agreement pursuant to 36 CFR 800.6(c)(3); and

WHEREAS, public comment on the proposal has been sought through the project Citizens Advisory Committee and at a public meeting held on 5 February 2001, and will be solicited at later phases of the project as stipulated in this agreement;

NOW, THEREFORE, the Corps, MnSHPO, and MPRB agree that the Lake of the Isles Renovation Project shall be administered in accordance with the following stipulations to satisfy the Corp's Section 106 responsibilities for all phases of this undertaking.

STIPULATIONS

The Corps will ensure that the following measures are carried out:

1. Project work planned for implementation in 2001. The MPRB plans for 2001 project work, which include a) shoreline protection and wetland mitigation on the north shore of Kenilworth Lagoon, b) canoe landing on north shore of Kenilworth Lagoon, and c) wetland mitigation just west of the canal connecting Lake of the

Isles and Lake Calhoun (as detailed on the plans dated 5 April 2001) will have no adverse effect on the historic characteristics of the historic district.

2. Master plan for future project work. The master plan for the project will continue to be developed by MPRB in consultation with the MnSHPO and the MHPC. The plans will reflect the Secretary of the Interior's Standards for the Treatment of Historic Properties, and the Guidelines for the Treatment of Cultural Landscapes ("Standards and Guidelines"). The planning process will incorporate the following:
 - A. A facilitated discussion with the Minnehaha Creek Watershed District and others involved in the implementation of Wetland Conservation Act of 1991 to explore ways to effectively integrate historic landscape concerns and wetland conservation concerns within the overall planning process.
 - B. A public forum discussion on general historic landscape values and issues, including a specific look at the defining features of the historic landscape at Lake of the Isles and how those features are addressed in project planning.
3. Review of subsequent phases of project work. Specific plans for subsequent phases of project work will be developed in consultation with MnSHPO and the MHPC. There will be an opportunity for public comment on the work proposed for each phase, following which the plans will be submitted to MnSHPO for review and concurrence. If the plans for a specific phase do not meet the Standards and Guidelines, or if they include other adverse effects as defined in 36 CFR 800.5(a), the MPRB will inform the COE, and COE will comply with the provisions of 36 CFR 800.5-800.7 and consider ways to avoid, minimize, or mitigate those adverse effects.
4. Archaeology. To the extent feasible, plans for all phases of the project will avoid effects to archaeological properties identified in the survey completed by Archaeological Research Services (2000). If effects to these sites cannot be avoided, MPRB will notify the COE of the adverse effects as indicated under provision #3, above.
5. Interpretive plan. Within 12 months from the execution of this agreement, the MPRB will prepare an historical interpretive plan for Lake of the Isles, as outlined in Appendix A of this agreement. The specific scope of the plan and its elements will be designed in consultation with MnSHPO, and will be submitted to MnSHPO for concurrence.
6. Modification, amendment, or termination of this agreement as necessary shall be accomplished by the signatories in the same manner as the original agreement.

7. Disputes regarding the completion of the terms of this agreement shall be resolved by the signatories. If the signatories cannot agree regarding a dispute, any one of the signatories may request the participation of the Advisory Council on Historic Preservation (Council) to assist in resolving the dispute.
8. Duration. This agreement will remain valid until January 1, 2005, at which time the parties to the agreement will consult to agree that the terms have been fulfilled, or agree to amend the agreement or extend its terms.

Execution and implementation of this Programmatic Agreement evidences that the COE has taken into account the effect of the Lake of the Isles Renovation Project on historic properties and has afforded the Council an opportunity to comment.

U.S. ARMY CORPS OF ENGINEERS

By: Robert J. White Date: 5/6/01

MINNESOTA STATE HISTORIC PRESERVATION OFFICER

By: Anna M. Archambault Date: 5/14/01

Invited signatory:

MINNEAPOLIS PARK AND RECREATION BOARD

By: Thomas C. Hagedorn Date: 5/30/01

Concur:

MINNEAPOLIS HERITAGE PRESERVATION COMMISSION

By: Robert P. Rosen Date: May 22, 2001

12/1/99
FACT SHEET

Background Information Only

regional park

Lake of the Isles

concept plan



FROM A WETLAND TO A LAKE

Beginning in 1898, dredging transformed a wetland into Lake of the Isles Regional Park, a beautiful lake and landscape with meandering shorelines, stately trees and rolling lawns. Lake of the Isles is a treasured park and important part of the Chain of Lakes which is visited by over two million people each year. Isles is a unique "cultural resource" complete with serpentine bicycle and pedestrian paths, romantic vistas & islands, popular skating rink, and idyllic canoeing conditions.

CULTURAL RESOURCE

A SITE OR STRUCTURE WHICH IS PART OF THE AREA'S CULTURAL HERITAGE THAT IS, WHICH TYPICALLY A PARTICULAR STATE OR NATION'S ACTIVITY IN THE AREA, CULTURAL RESOURCES INCLUDE ARCHAEOLOGICAL DATA, HISTORIC BUILDINGS AND SITES, AND UNDESIGNED NATURAL SITES.

AN ENDANGERED RECREATION RESOURCE

Decades of urban development have significantly increased stormwater runoff to the lake resulting in diminished water quality, eroded shorelines, and damaged vegetation and recreation facilities. The severity of the 1997 flood demonstrated to a concerned community the need to act now.

RESTORING THE PARK

The Minneapolis Park and Recreation Board is committed to improving the recreation facilities around Lake of the Isles and restoring the beauty. **This concept plan focuses on balancing the picturesque qualities of the park with a lasting and healthy landscape and to restore the park for the enjoyment of present and future generations.**

OUR HISTORY

The MPRB established a nineteen member Citizen Advisory Committee with representatives from across the city and the adjacent neighborhoods of Cedar-Isles-Dean, Kenwood Isles, Lowry Hill, Lowry Hill East, and East Isles.

The Board's charge to the Committee was to assist in the development of a concept plan for Isles that would: repair flood damages, provide permanent improvements that are functional, environmentally sensitive, aesthetic, and mitigate damage from future water fluctuations.

OUR BUDGET & FUNDING

The Concept Plan has identified over 9 million dollars of improvements for Lake of the Isles. Currently there are no funds designated towards implementation of the Plan. Potential sources of funds might include a special appropriation through the Legislature, Metropolitan Parks & Open Space

Commission, NRP dollars through adjacent neighborhoods, special grants and/or private donations. The MPRB is committed to securing funds for the restoration of the lake and its shoreline.

ISLES FAST FACTS

BACKGROUND

- YEAR LAND ACQUIRED: 1898
- NUMBER OF ORIGINAL ISLANDS: 4 (GIVEN THE LAKE'S NAME)
- CURRENT NUMBER OF ISLANDS: 2
- LARGER ISLAND NAME: BAYVIEW ISLAND
- SMALLER ISLAND NAME: BEE'S ISLAND
- YEAR LINKED TO LAKE CALLED: 1911
- YEAR LINKED TO (SOME LAKE): 1913

VITAL STATISTICS

- PARK LAND AREA: 107 ACRES
- WATER SURFACE AREA: 95 ACRES
- MILES OF SHORELINE: 2.86 (3.86 INCLUDING LAGOONS)
- AVERAGE DEPTH OF LAKE: 28 FEET
- AREA FLOODED (1997): 22.4 ACRES

RECREATION

- LENGTH OF BIKE TRAIL: 2.97 MILES
- LENGTH OF PEDESTRIAN TRAIL: 2.60 MILES

EVOLUTION

- YEAR FRESHWATER LAKE: 1899
- YEAR BRACKISH TONED: 1911
- AMOUNT OF MATERIAL DROPPED TO CREATE BEE ISLAND: 500,000 CUBIC YARDS
- AMOUNT OF MUD FILLED FROM LAKE (MUD): 40+ ACRES
- AMOUNT OF MUD IN LAKE WATER SELECTION CARRIED BY 3 MILES OF RAINFALL: 3 MILES
- AMOUNT OF MUD DEPOSITED TO EACH LAKE LEVEL: 3 MILES = 14,868,342 GALLONS
- MUD IN LAKE LEVEL (SUMMER 1997): 3.16 FEET
- AMOUNT OF WATER PUMPED IN JULY 1997 WITH NO DECISION ON WATER LEVEL: 30 MILLION GALLONS

PLANNING & DESIGN OBJECTIVES

The following planning and design objectives were prepared early in the planning process during meetings with the Lake of the Isles Citizen Advisory Committee. As work continued, the objectives were "guiding principles" for making decisions on how primary issues were treated in the Concept Plan.

WATER QUALITY

- Monitor the progress of the Chain of Lakes Clean Water Partnership in their efforts to improve water quality in Lake of the Isles, Cedar Lake, Brownie Lake, Lake Colhoun and Lake Harriet.
- Explore ways to minimize the amount of litter that enters lakes from the storm drainage system.

SHORELINE STABILIZATION & AESTHETICS

- Employ a variety of "hard edge" and "soft edge" solutions.
- Develop unique solutions using vegetation.

VEGETATION

- Preserve as much existing vegetation as possible.
- Landscape should exhibit variety in texture, color and size with respect to selected plant materials.
- Do not screen views to the lake.
- Plant shoreline vegetation to stabilize lakeshore areas and transition to "picturesque landscape style" in the park areas nearer to the neighborhood.
- Develop a master planting plan.
- Design landscape to assist in discouraging geese from congregating in the park.

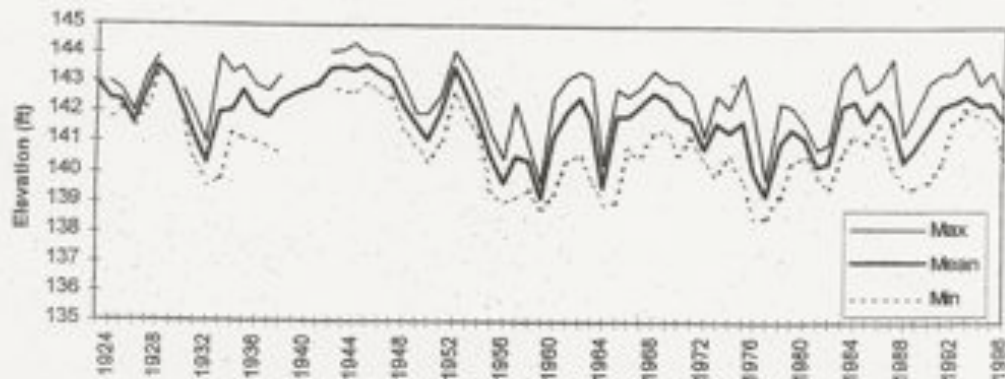
CHAIN OF LAKES WATERSHED



7000 acres of land drains to the Chain

- Explore filling of some areas to provide suitable conditions for a greater variety of upland plants and for "compensatory storage". (especially in the North Arm and West Bay areas).

Historical Water Level Data for the Chain of Lakes



Water levels change from year to year. The normal water level is 141.5; the 1997 flood elevation was 143.

TECH TERMS

MUCK SOILS

SOILS MADE FROM DECAYING PLANT MATERIALS.

MITIGATION

THE SUBSTITUTION, REDUCTION OR COUNTERING OF THE ADVERSE ENVIRONMENTAL EFFECTS OF THE PROJECT, AND DAMAGES RESTITUTION FOR ANY DAMAGE TO THE ENVIRONMENT CAUSED BY SUCH EFFECTS THROUGH REPLACEMENT, RESTORATION, COMPENSATION OR ANY OTHER MEANS.

COMPENSATORY STORAGE

A VOLUME OF WATER STORAGE WITHIN A FLOOD PLAN USED TO BALANCE THE LOSS OF NATURAL FLOOD STORAGE CAPACITY WHICH WILL BE STRUCTURES ARE PLACED WITHIN THE FLOOD PLAN.

BUILT FACILITIES

- Explore alternative locations and aesthetics of existing recreational facilities.
- Explore permanent and non-permanent designs for the ice skating warming house.
- Consider designing attractive screens for portable toilets.
- Explore alternatives to keep and improve the existing soccer field.
- Determine need for the MPSS storage yard in its present location.
- Keep well pumps as a source for drinking water.
- Explore light fixture design options.
- Pursue permanent attractive design solutions for paths & entrance gateways.
- Emphasize the lake's north end as a gateway to the park and to the Chain of Lakes.



Removing buckthorn will help create a more attractive landscape.

LAKE & LAGOONS

- Explore a variety of alternatives for increasing "compensatory storage" capacity of the lake basin to allow filling of some low areas in the park.
- Consider development of a third island in the west bay area of the lake.
- Include the Kenilworth and south lagoon in the master plan study area.
- Explore including bike lanes in the Isles Parkway corridor.

CIRCULATION

- De-emphasize the automobile and encourage pedestrian use in the design of roads and paths.
- Connect to the 29th Street Midtown Greenway Trail.
- Discourage commuter traffic through the neighborhood and the park.
- Do not route trails to Cedar Lake via the Kenilworth Lagoon corridor.

LAKE OF THE ISLES PLANNING TEAM

Minneapolis Park & Recreation Board
200 Grain Exchange, 400 South Fourth Street
Minneapolis, Minnesota 55415-1400

CONCEPT SUMMARY

NORTH ARM CONCEPT

Highlights include

- Creating a "gateway" to the Chain of Lakes at the north end of Isles,
- Combining Franklin Ave. and Lake of the Isles Parkway at their east by the north end of the lake,
- Adding a bridge in the road at the northern tip of the lake so bike and pedestrian can pass safely between Lake of the Isles and Winwood Park,
- Including new signs, lighting and landscaping to identify and improve the appearance of the area, and
- Potentially expanding the lake basin northward to increase water storage capacity.

WEST BAY CONCEPT

Highlights include

- Excavating to create a small island and increase the water storage capacity, and
- Filling in other areas to create more useable upland lawn areas.



FACT 8 SHEET

Revised 12/2/99

SOUTH SHORE CONCEPT

Highlights include

- Providing upgraded soccer and softball fields or expanding the lake basin southward for additional water storage capacity,
- Providing a parking lot for visitors to the lake and the 23rd Street Midtown Gateway,
- Realigning Lake of the Isles Parkway so that it is no longer a barrier between parkland and the lake,
- Planting the shoreline of the south lagoon to prevent erosion, and
- Improving access to the lagoon for fishing.

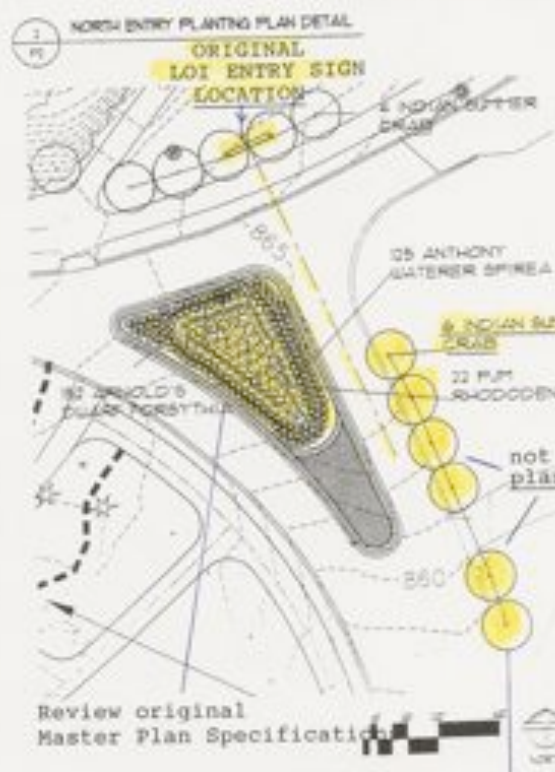
rental
by



LANDSCAPE ARCHITECTS & PLANNERS
295 East Irving Street
Suite 1000, St. Paul, MN 55101
Phone: (612) 221-2481
Fax: (612) 241-4817

**LAKE OF THE ISLES
2007 SITE
IMPROVEMENTS**

MINNEAPOLIS
PARK &
RECREATION
BOARD
MINNEAPOLIS,
MINNESOTA



I hereby certify that this plan, specification, or report was prepared by me or under my direct supervision and that I am a duly licensed landscape architect under the laws of the State of Minnesota.

[Signature]
Date: _____ Reg. Number: _____

Project Number:	0501	
Drawn By:	MB	
Original Issue Date:	04/20/07	
Revision:	Date Description	

PLANTING PLAN -
UPPER NORTH ARM

SHEET
P2

(6) INDIAN SUMMER CRAB



MINNESOTA HISTORICAL SOCIETY
STATE HISTORIC PRESERVATION OFFICE

January 11, 2002

Mr. Cliff Swenson
Minneapolis Park & Recreation Board
200 Grain Exchange
400 S. 4th Street
Minneapolis, MN 55415

RE: Lake of the Isles Regional Park Rehabilitation
Minneapolis, Hennepin County
SHPO Number: 99-3677

Dear Mr. Swenson:

As part of our ongoing review of the Lake of the Isles Rehabilitation Project, you have requested that we comment on the overall impact of the on-site wetland mitigation measures that have been incorporated into the proposed project plans.

As you know, the parks and parkway system around Lake of the Isles have been determined to meet the criteria of the National Register of Historic Places, as one of the most intact parts of the city's nationally significant Grand Rounds system. The evaluation of this part of the Grand Rounds is documented in the assessment of significance (December 1999) completed by Hess Roise and Company.

The Section 106 memorandum of agreement, completed as part of the U.S. Army Corps of Engineers permitting process, stipulates review of each phase of the project. The goal of this consultation is to achieve compliance with the Secretary of the Interior's Guidelines for the Treatment of Cultural Landscapes, and thereby preserve the integrity of the park as a historic landscape.

As conceived by H.W.S. Cleveland and realized by William Berry and Theodore Wirth, the design of the park and parkway emphasizes a concentric organization of space delineated by the shoreline, paths, and parkway, encompassing broad expanses of lawn framed with trees and shrubs to highlight important views and vistas. The specific features of the historic design retain a high degree of integrity.

We certainly understand the overall need to address the issue of wetland replacement when such areas are reduced or lost as part of a project. In this case, creating replacement wetlands by excavating historic park lawn areas would adversely affect the landscape's spatial organization and historic integrity. The proposed new wetland areas in the west and north arms disrupt the sinuous line of the shore, and alter the land patterns of the parkland. We would hope that other wetland mitigation strategies, such as off-site replacement, could protect the historic landscape and effectively address the wetland issues.

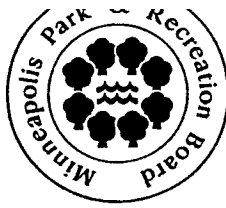
We look forward to continuing to work with you in addressing this issue, as well as considering other aspects of the project design, including vegetation, wall and overlook rehabilitation and construction, and path design. Contact us at 651-296-5462 with questions or concerns.

Sincerely,

A handwritten signature in black ink, appearing to read "Dennis A. Gimmestad". The signature is fluid and cursive, with a prominent initial "D".

Dennis A. Gimmestad
Government Programs and Compliance Officer

cc: Eric Evenson, Minnehaha Creek Watershed District
Greg Mathis, Minneapolis HPC
Joe Yanta, COE
Charlene Roise, Hess Roise
Larry Wacker, SWB



Memorandum/Transmittal
MINNEAPOLIS PARK & RECREATIONBOARD
200 Grain Exchange - 400 South 4th Street
Minneapolis, Minnesota 55415-1400
612.661.4800 fax 612.661.4777

DATE: January 4, 2002
TO: Heritage Preservation Commission - Commissioners
FROM: Cliff Swenson, Project Manager
RE: *Lake of the Isles Regional Park Renovations – Phase II Renovations*
CC: File

Thanking you for taking the time to review and comment on the Phase II plans for the Lake of the Isles Regional Park Renovations. Your comments and input for this phase and all future phases is called out in the Programmatic Agreement for the project. We value the input by the HPC as we endeavor to preserve and renovate the “Jewel”, Lake of the Isles. The intent of the proposed renovations is to balance our park systems’ cultural, historical, environmental and recreational resources.

Thank you for all of your work on this project and we look forward to the meeting on the 15th. If you have any questions concerning our proposal, please don’t hesitate to contact me at (612) 661-4821.

EAST ISLAND
SHOPPING

Musser Forests, Inc.

[Home](#) [About Us](#) [Contact Us](#) [Visit Us](#)

800/643-8319

[Quick Order](#)
[View Cart](#)
[Checkout](#)

Search

[GO](#) [Plant Index...](#) [A](#) [B](#) [C](#) [D](#) [E](#) [F](#) [G](#) [H](#) [I](#) [J](#) [K](#) [L](#) [M](#) [N](#) [O](#) [P](#) [Q](#) [R](#) [S](#) [T](#) [U](#) [V](#) [W](#) [X](#) [Y](#) [Z](#)

- Plant Index
- Plant By Use
- Plant By Variety

Willow, Bankers
Dwarf
Salix x cotinif



- Tools
- Books
- Planting Aids
- Fertilizer
- Repellents

Item #	Description	Height	Quantity/Price (Please Select One)
BDWILT1	1-YR. TRANSPLANTS	1-3 Ft.	x <input type="text" value="5"/> \$34.95

- Gift Certificates
- Catalog Request



- Planting Instructions
- Shipping Info
- Site Map
- Canadian Customers

Mature height and spread 4 to 6 feet. A fast growing, dense shrub designed for erosion control on stream banks. Very vigorous growth can withstand flooding. Any soil. Has medium width, light green leaves, turning yellow in fall. Competes well with grass and other native plants. A good wetland species.

Zone: 3-8
Height: 4-6 Feet
Spread: 4-6 Feet
Restrictions: None

FAST GROWING!

[Back to Product List](#)



All nursery stock listed is bare-root stock unless otherwise noted. Bare-root is shipped March 1 - May 15 and September 15 - November 30. Potted and container grown stock shipped year round.

[Home](#) | [About](#) | [Quick Order](#) | [Catalog Request](#) | [Shipping](#) | [Planting](#) | [Contact](#)

Historic Park and
Recreation Board

Gimmestad, Dennis

From: Boyd, Deborah F. [dboyd@minneapolisarks.org]
Sent: Friday, July 13, 2007 11:26 AM
To: Yanta, Joseph J MVP
Cc: Gimmestad, Dennis; Larry Wacker; Rietkerk, Judd H.
Subject: Lake of the Isles 2007 construction

Joe,
I am requesting a go-ahead from the Corps to begin construction of the 2007 Phase of the Lake of the Isles. We have identified portions of the project that we believe are not objectionable to SHPO. We would like to begin construction as soon as possible on the following items.

- Paths
- Grading work as required
- • Shoreline stabilization work with the dead, arctic willow and bankers willow replaced by the smaller plant varieties that we are using
- Canoe storage areas with concrete curbs tinted a darker grey
- Canoe dock at south canoe storage area
- Retaining walls at bridges
- Stone shoreline access features
- ↳ Interpretive panel
- Bench pads
- Water system at southwest planting area

The balance of the construction will be scheduled once SHPO has concurred with the plans and the Corps gives us the final okay.

Your timely response to this request is greatly appreciated.

Deb

Deborah Boyd
Project Manager
Minneapolis Park and Recreation Board
2117 West River Road
Minneapolis, MN 55411

Phone 612-230-6460
Cell 612-490-8900
Fax 612-230-6506

7/18/2007

State Historic Preservation Office

September 27, 2007

Mr. Joe Yanta
Regulatory Branch
U.S. Army Corps of Engineers
190 5th Street East
St. Paul, MN 55101-1638

Re: Lake of the Isles Renovation Project
Minneapolis, Hennepin County
SHPO Number: 1999-3677PA

Dear Mr. Yanta:

As you know, the USACE, the Minneapolis Park and Recreation Board (MPRB), our office, and other interested parties signed a Section 106 Programmatic Agreement (PA) for work on Lake of the Isles as part of your permitting process. After execution of the PA our office reviewed the initial work on the lake, focusing on the shoreline stabilization work on the east shore.

In early 2007, as new work was proposed for other portions of the overall project, it was discovered that several phases of project work, already completed or underway, had not been submitted for review as required by Stipulation #3 of the PA. Through consultation with your office and with the MPRB, we agreed to review those projects and offer comments about any cultural resource concerns.

A description of these six projects (completed or underway), along with selected project plans, was submitted to us by Larry Wacker of SWB on 20 July 2007. The six projects include: Southwest Mitigation (8/6/03), Phase 3A (3/15/04), North Arm Surcharge Project (8/18/04), North Arm Surcharge Removal Project (3/10/05), Topsoil Installation and Turf Establishment (5/24/05), and North Shoreline Improvements (6/29/06). We have reviewed these plans, and have the following comments:

1. Our previous review comments (14 June 2002) on the shoreline protection plantings for the east shore stipulated that those plantings should be monitored to assess their suitability within the historic landscape and their general viability and heartiness. Those comments went on to state "the results of this monitoring may influence shoreline plans for subsequent phases of the project, and may suggest further modification of the areas planted in this phase as well." That monitoring did not occur as anticipated. Consequently, the subsequent shoreline protection plantings for the north arm and the west bay were installed (without review), with plantings similar to the initial east shore work. It has become apparent that some of the species included in these planting plans have far exceeded the anticipated heights. These tall plantings create a barrier between the parkland and the lake, effectively block key views, and are not in keeping with the historic landscape character. Options to address this situation include periodic mowing

or trimming of the taller plant material, or removal of the taller plant material and replacement with shorter species. A plan, including timetables and consideration of available maintenance resources, needs to be developed for the east shore, north arm, and west bay shorelines. The Kenworth Lagoon shoreline should also be reviewed and included in the plan.

2. The addition and removal of the surcharge in the north arm and west bay areas addressed some crucial issues related to flooding and restoration of the topography of the historic landscape. We recognize that there was a strong desire to preserve quality tree specimens during this process. However, preserving some of these trees has resulted in a series of bowl-like depressions in the finished landscape to accommodate the lower elevations of the tree bases. These depressions are a departure from the historic landscape character. Over time, as the trees in these depressions are replaced, a more level surface appearance should be restored.

3. The public comment on this project has included concerns about the unevenness of the ground surface of the restored turf in the surcharge areas. This surface may be important to historic recreational uses of these lawns, and this issue should be further assessed.

The above comments address our concerns about the six projects that were constructed without the consultation required under stipulation #3 of the agreement for the project.

We have also been reviewing the current 2007 project phase in consultation with the MPRB staff. We appreciate the MPRB's efforts to solicit comments from the public at a meeting on 26 June 2007, and the efforts of MPRB staff and consultants to respond to those comments and our concerns at a series of subsequent meetings. We reviewed the plans submitted to our office on 20 July 2007 (plans dated 4/06/07), and through consultation with you and the MPRB staff, we have agreed that the plans met the Secretary of the Interior's Standards for Rehabilitation, with the following conditions:

1. The proposed shoreline plantings for the 2007 project will not include the taller species included in the other installed shoreline plantings (specifically, the arctic willow and the banker's willow will be totally eliminated).
2. The picnic tables and individual picnic shelters have no precedence and are out of character with the historic landscape; they will be eliminated.
3. Ordinarily, the use of modular block for new work adjacent to historic concrete bridges, particularly on bridges with a recognized architectural style, is out of character and diminishes the overall historic image of the structure. At the same time, we recognize the need to arrest erosion problems before they become serious. You have indicated that the following conditions apply to the modular block which will be installed as part of the 2007 work: a) the bridges on the parkway at Isles will be fully rehabilitated as a later project, b) the concrete modular block being installed as part of the 2007 work is a temporary measure to address immediate erosion problems, and c) the modular block will be replaced with a more appropriate material as part of the bridge rehabilitation projects.
4. We recognize the need to provide access points to the water through the new shoreline plantings at certain locations. The current design for modest stone structures

at these points is simple and a great improvement from earlier more elaborate proposals. We would urge that the 2007 work include a limited number of these structures so that their utility and performance can be evaluated. If they do not serve the purpose for which they were intended, they should be reworked or removed, and it would seem easier to accommodate these adjustments without installing all the structures at the outset.

5. We understand that the semi-circular bench arrangement and the double bench arrangement with the interpretive panel on sheet L9 of the plans have both been eliminated. One memorial double bench of traditional bench design will be re-installed as part of the project.

6. At the proposed canoe storage areas, the area of pea gravel coverage will be constricted to the smallest area needed, and the concrete curbs will be designed and cured to reduce their visual prominence in the landscape.

7. The overall planting plan will be reconfigured to better reflect the historic density and massing of the landscape. Reducing the overall number of trees and eliminating the "L" shaped shrubs at the path intersections were concerns expressed in the public input process this summer. In an earlier discussion on the vegetation plan, SWB compared portions of the new planting plan to historic photos of the same location. Such comparisons relate the new plantings to the specific historic landscape character of this place, and it will be helpful for the revised plan to reference such comparisons as well. We would expect to meet with the MPRB staff and other interested parties to review the revised planting plan sometime in the coming months.

The cooperation of Deb Boyd of the MPRB staff, the input from concerned citizens and organizations, and the efforts of Larry Wacker and Bill Bleckwern of Sanders Wacker Bergly, have all been helpful in this review. We look forward to continuing consultation on this and future phases of the project.

Contact us at 651-259-3456 with questions or concerns.

Sincerely,

Dennis A. Gimmestad
Government Programs & Compliance Officer

cc: Deb Boyd, Minneapolis Park and Recreation Board
Larry Wacker, Sanders Wacker Bergly
Gary Bennett, Kenwood Isles Area Association
Jack Byers, Minneapolis Heritage Preservation Commission
Pat Scott



94-367
H

Minneapolis
Park and Recreation
Board

November 16, 2007

RECEIVED

NOV 20 2007

Administrative Office
2117 West River Road
Minneapolis, MN 55413-2127
Phone: 612-230-6400
Fax: 612-230-4900

Operations Center
3800 Bryant Avenue South
Minneapolis, MN 55409-1000
Phone: 612-270-4900
Fax: 612-270-4811

Mr. Dennis A. Gimmestad
Government Programs & Compliance Officer
Minnesota Historical Society
State Historic Preservation Office
345 Kellogg Boulevard West
St. Paul, MN 55102-1906

RE: *Lake of the Isles Park*

Dear Mr. Gimmestad:

Your letter addressed to Mr. Joe Yanta on September 27, 2007 expressed three areas of concern resulting from the six phases of the Lake of the Isles project that occurred without review by the State Historic Preservation Office: the need for a shoreline maintenance plan, a plan for managing the tree wells or bowls that are out of historic character, and a resolution to the poor turf establishment in the west bay and north arm. The Minneapolis Park and Recreation Board's response to these issues follow.

President
Joe C. Olson

Vice President
Tracy Nordstrom

Commissioners
Mary Merrill Anderson
Walt Dziadosz
Bob Fine
Carol A. Kummer
Tom Nordyke
Scott Vresland
Annie Young

Superintendent
Jon R. Gulian

Secretary to the Board
Don Siggelkow

www.minneapolis-parks.org

Equal Opportunity Provider of
Goods and Recreational Services
Minneapolis 328 and 329-1111

Shoreline Maintenance Plan

Bi-mowing will be used by park maintenance staff to mow the shoreline plantings along the east shore, north arm, west bay and Kenilworth Lagoon shorelines. This procedure will be done each year in late June and again in August. The bi-mower trims the plants so that they are roughly knee high. See attached photos of this year's mowing. The process has been added to the routine maintenance schedule for Lake of the Isles. MPRB project manager will monitor the results of the maintenance procedure through 2010 and provide an annual report to SHPO. Adjustments to the maintenance plan will be considered if the maintenance practices proposed here do not provide the desired outcome.

Tree Wells

It is recognized that the tree wells that were created to save trees deviate from the historic character of the site. As trees are removed, due to death or disease, from the tree wells the wells (bowls or depressions) will be filled with soil, graded to

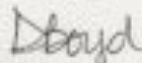
drains but some are plugged

match the slope to the lake and restored to turf. If trees are planted to replace those that are lost they will be planted at the re-established elevation.

Turf re-establishment

In addressing concerns about the turf in the surcharge areas, the north arm and west bay ground surface was prepared for seeding this fall by using a vibrating aerator to fracture compacted soil in the areas that had some turf cover. Other areas were prepared by using a chisel plow to loosen soil that was compacted by construction traffic. In addition the soil has been amended to improve fertility. Terraseed, a relatively new method of seeding, is being used to provide the greatest potential for successful turf cover. The seed is mixed with finely ground compost and spread by spraying the mixture at a depth of 1" onto the prepared soil. This method of seeding will be used, not only in the west bay and north arm, but everywhere turf is called for throughout the project area. Turf establishment will be evaluated in the spring and summer of 2008.

Sincerely,



Deborah Boyd, Project Manager - *Left HARR last December*

Attachment

cc: Joe Yanta, U.S. Corps of Engineers

Attachment 1
Lake of the Isles
Shoreline Maintenance with bi-mower August 2007



LAKE OF THE LAKES REHABILITATION
MARCH 2005

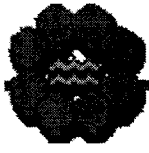


REHABILITATION PHASING PLAN

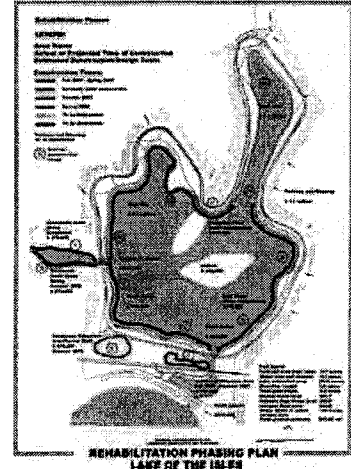
BARBARA WALKER HENRY, INC.
LANDSCAPE ARCHITECTS AND PLANNERS

3/1/05 10/10/05 1/1/06

Satellite
M-17 2005



The Minneapolis Park and Recreation Board's renovation of Lake of the Isles, underway since 2001 (following several years of planning), is nearing completion. A massive and costly undertaking, the project has restored this beloved park known for its picturesque beauty. Poor soils around the lake, coupled with ever-increasing urban runoff and the devastating rain events of the late 1990s, had created a situation in which pathways and parkland were under water much of the year. In addition, erosion of an unstable shoreline had seriously degraded the lake's water quality. Over the last eight years, the MPRB stabilized the lake's shoreline, restored and enhanced wetland



areas, reconstructed the paths, restored upland plants and elevated recreation areas to make the park once again beautiful and usable as well as sustainable. With the completion of tree planting this spring, parkway repaving this summer, and island restoration throughout the year, the Lake of the Isles renovation project is virtually complete.

Lake of the Isles Restoration Photos

- Parkway Repaving and Bridge Repair
- March Island Cleanup; Spring and Beyond Planting
- Spring Tree Planting
- Renovation Goals
- Maintaining the Park's Historic Character
- Trees
- The Shoreline Challenge
- Funding

Parkway Repaving and Bridge Repair

City Public Works is making preparations for repaving the parkway this summer. A public information meeting was held March 30 to provide information to area residents regarding such details as paving schedules and detours. Councilmember Lisa Goodman has formed a committee composed of two members from each of the four neighborhoods that will be affected by the repaving project. Committee members will act as a liaison to their respective neighborhoods during the course of the repaving. For further information regarding the parkway repaving call the street

- Above the Falls
- B. F. Nelson Park
- Capital Improvement Program
- Franklin Steele Square
- Grand Rounds Missing Link
- Lake Calhoun Parking Lot Project
- Lake of the Isles Project
- Minnehaha Park Renovation
- Mississippi River Gorge
- North Mississippi Regional Park
- Sheridan Memorial Park
- West River Parkway
- More Current Projects

maintenance section of Public Works at 612-673-3759.

Beginning with the Calhoun Lagoon bridge, Park Board crews have been tuckpointing and performing other general maintenance on the Lake of the Isles Parkway bridges. When the tuckpointing is complete, crews will focus on the sidewalk areas, cleaning up the stone and caulking the joints. Bridge maintenance work will not hinder traffic on Lake of the Isles Parkway or on the bike and pedestrian trails.

The bridge decks were repaved with concrete last fall, in preparation for the upcoming parkway paving. The new decking is expected to last for as long as 50 years.

Back to top

March Island Cleanup; Spring and Beyond Planting

Completing work that began last summer, forestry crews in early March cut selected half-fallen trees, buckthorn and other invasive plants, burning the cut material in controlled fires. Shrubs will be planted along the perimeter of the islands this spring. Treatment of invasive species will continue on the islands this spring and fall. Native trees and shrubs will then be planted inland on the islands this fall or in the spring of 2010. If native species can get a good start, the hope is that they will prevent the many persistent invasive species trying to take over the islands, especially on Raspberry Island. The planting plan for the restoration of the islands was presented at a public meeting in May 2008, offering area residents and park users the opportunity to review the plan, ask questions and make suggestions. Both Mike's Island and Raspberry Island will continue to be designated as wildlife refuges as identified in the approved lake of the Isles master plan, and as such are not, and will not be, open for public use or programming.

Back to top

Spring Tree Planting

Trees to be planted this spring by MPRB forestry crews will complete implementation of the approved planting plan begun on Arbor Day 2008. Two-hundred-eighty trees will be planted, including two varieties of disease resistant elm, Valley Forge and Princeton; burr, northern pin, and bicolor white oak; red maples; river birch; crab apple; linden; basswood; the Kentucky coffee tree; black and Niobe weeping willow; hackberry; black walnut; white pine; white and Norway spruce; white and red cedar; Douglas fir, and Degroot's spire arborvitae. The planting plan was reviewed at a public meeting in June 2007, and revisions were made based on comments and suggestions offered by area residents and park users, as well as the State Historic Preservation Office.

Back to top

125 (2008) →
 280 (2009)
 405

QUOTE →

Renovation Goals

In developing the Lake of the Isles Park renovation plan, the challenge has been to create sustainable as well as usable park space. Shoreline stabilization, wetland enhancement and restoration, path reconstruction, upland plant restoration, and the elevation of passive recreation areas are strategies that have been implemented to achieve

✱

the renovation goals, namely to balance aesthetics and the park's historic integrity with the recreation needs of park users and the sustainability of a fragile environment. ←

Back to top

Maintaining the Park's Historic Character

Because Lake of the Isles has been determined as eligible for listing in the National Register of Historic Places, improvements have been made with an eye to historic integrity. The lake's tendency to revert to its former swampy self, however, makes this especially challenging. The many tons of fill brought in to raise the lake's surrounding parkland above the 100-year flood level is one example of the lengths to which the MPRB has gone to satisfy both ecological and historic interests.

Back to top

Trees

In devising the tree planting plan, Sanders Wacker Bergly consultants Bill Bleckwenn and Larry Wacker studied photographs of the park during what has been determined to be the historic "period of significance"—1886 to 1941—as well as bills of sale for plants acquired in the 1920s and '30s. They overlaid aerial photographs from the 1970s—a time when trees planted in the '20s and '30s had grown to maturity—to create a plan that replicates as closely as possible the clusters of trees and open spaces.

Over 400 trees have been lost since the 1970s to Dutch elm disease and, in the past decade, to severe storms, flooding and construction. While many of the lost elms were replaced with other specimens, of the nearly 400 trees that will be planted, many will be one of two disease resistant varieties of American elm.

Back to top

The Shoreline Challenge

The main area in which today's Lake of the Isles differs from the historic "period of significance" is the shoreline. In the 1920s and '30s, lawn stretched to the water's edge. Because of the difficult topography and ecological realities, it is not feasible to mow to the water's edge to re-create this historic element today. The conversion of areas around the west bay and north arm into wetlands, which would have created the most ecologically sensible solution to Isles' recurring flooding problems, was deemed to be too far off the historic mark. Maintaining a defined shoreline in this environment required a compromise: most of today's shoreline has been stabilized with state-of-the-art technology that relies on native plants—grasses, flowers, and shrubs—ultimately taking root and holding the shoreline in place.

To offer park visitors the ability to reach the water's edge, stone access points have been built around the lake. An alternative to negotiating shrubbery, these access points protect the shoreline plantings—and therefore the shoreline—from human traffic.

Back to top

Funding

The Lake of the Isles renovation to date has been funded through the Minnesota Environment and Natural Resource Trust Fund: Legislative Commission on Minnesota Resources, the Minnesota DNR Flood Mitigation Program, the Metropolitan Parks and Open Space Commission, East Isles Residents Association, Kenwood Isles Area Association, Lowry Hill East Neighborhood Association, Cedar Isles Dean Neighborhood Association and private donations.

Funds total \$8,923,763. Any remaining funds are being used to complete island restoration, the upcoming spring tree planting, and bridge work.

Back to top

[About MPRB](#) | [Parks & Lakes](#) | [Recreation Centers](#) | [Golf Courses](#) | [Activities](#) | [Permits](#)
[Caring for Our Parks](#) | [Design & Planning](#) | [Grand Rounds](#) | [Volunteer!](#) | [Employment](#) | [Site Map](#) |
[Search](#)
[Contact Us](#) | [Home](#)

 Minnesota
Historical Society
State Historic Preservation Office

December 30, 2009

Mr. Joe Yanta
Regulatory Branch
U.S. Army Corps of Engineers
190 5th Street East
St. Paul, MN 55101-1638

Re: Lake of the Isles Renovation Project
Minneapolis, Hennepin County
SHPD Number: 1999-3677PA

Dear Mr. Yanta:

As you know, in 2001, the USACE, our office, and the Minneapolis Park and Recreation Board executed a Section 106 Programmatic Agreement for the Lake of the Isles Renovation Project in Minneapolis.

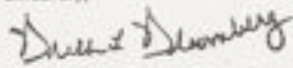
The parkway system around Lake of the Isles is a component part of the Minneapolis Grand Rounds, which meets National Register criteria as a historic landscape. We appreciated the opportunity to review the areas of project work with your office this past summer. We are writing at this time to provide a summary of outstanding issues which we have identified under the terms of the Programmatic Agreement.

1. Interpretive Plan. Stipulation #5 of the agreement requires an interpretive plan. This plan needs to be completed.
2. Shoreline Plantings. Several of our letters on various phases of the project work have discussed the issue of shoreline plantings (see our letters of 14 June 2002, item #1; 30 June 2004, item #3; 27 September 2007, item #1/page 1; 27 September 2007, item #1/page 2). These comments addressed the fact that some shoreline plantings, particularly on the east shore, north arm, and west bay, have far exceeded their anticipated heights. These plantings create a barrier between the parkland and the lake, block key views, and disrupt the overall historic landscape character. Our earlier comments recommended development of a strategy to address this issue. The current periodic mowing scheme does not effectively address this issue as the tall vegetation is in place during a significant part of the warmer months. Removal and replacement of the tall plant material would appear to be the most sustainable solution.
3. Turf Areas. The re-establishment of the turf surface has been an important component of restoring the historic character and use of the open areas in the landscape. However, as indicated in our letter of 27 September 2007, item #3/page 2, the project methods have

produced an irregular ground surface in many areas. This condition affects both the appearance and usability of these areas, and should be addressed.

We look forward to working with you and the Minneapolis Park and Recreation Board in fulfilling the terms of this agreement. Contact us at 651-259-3455 with questions or concerns.

Sincerely,



Britta L. Bloomberg
Deputy State Historic Preservation Officer

cc: Judd Rietkerk, Minneapolis Park and Recreation Board
Andrew Lesch, Minneapolis Park and Recreation Board
Jack Byers, Minneapolis Heritage Preservation Commission
Mike Bono, Kenwood Isles Area Association
Harvey Ettinger, East Isles Residence Association
Pat Scott



SANDERS WACKER BERGLY, INC.
Landscape Architects And Planners

MEMORANDUM

TO: Andy Lesch
FROM: Larry Wacker
SUBJECT: June 22, 2010 Coordination Meeting Minutes – COE Permit Status for Lake of the Isles Improvements
DATE: June 25, 2010
CC: Joe Yanta Bill Bleckwenn

In Attendance: Joe Yanta, Andy Lesch, Bill Bleckwenn, Larry Wacker

The purpose of the meeting was to review the Lake of the Isles park improvement project status relative to the terms and conditions of the COE permit for the project. Larry W., Bill B. and Andy L. reviewed the history of the project, the work that was completed and the current condition of the shoreline plantings, turf, wetland mitigation areas, island vegetation and interpretive panels. The following is a list of major comments:

1. Joe Y. indicated he has been contacted by a few community members about the following concerns:
 - a. The turf condition in the park is not as good it should be, especially on the east side of the North Arm.
 - i. Andy L. and Larry W. mentioned that the turf condition in the project area is generally similar to other undisturbed areas at Lake of the Isles and other non-irrigated turf areas in the park system. The new lawn areas are expected to continue to develop and improve, particularly if rainfall patterns return to normal (precipitation rates have been far below normal for 3 out of the last 5 years).
 - b. The height of some of the shrub varieties planted along the shoreline is excessive.
 - i. Larry W. and Bill B. mentioned that the shrubs are doing a good job in helping to stabilize the shoreline as they are intended, however, the Arctic and banker's willow shrubs have grown taller than expected. Andy L. indicated that the Park Board does not support the idea of removing the willow shrubs because they are effective in protecting the shoreline. Park Board maintenance has been cutting the tall shrubs down once per season but will change to twice per season in response to resident comments. The first cutting will occur after the bird nesting season is over.
2. Joe Y. indicated that the quality of the vegetation in the southeast wetland mitigation area may benefit by planting prairie cord grass, big blue stem and other plant varieties with deep rooting characteristics. He said that monitoring of the southeast wetland condition should continue.
3. Joe Y. asked that the Park Board perform the following tasks:
 - a. Prepare a maintenance plan for the shoreline plantings, island vegetation, turf and new wetland vegetation.
 - b. Review the maintenance plan with the SHPO and interested community residents.
 - c. Consider removing tall shoreline shrubs in a few places where residents are concerned about the plants blocking views to the lake.
 - d. Complete installation of interpretive panels as described by Andy L.
 - e. Consider replacing the bulletin board on the kiosks with permanent maps or other permanent displays.
 - f. Renew the Memorandum of Agreement with SHPO.
4. Joe Y. indicated that he will consider whether the terms of the permit have been satisfied after the tasks described in item 3 above are complete.

365 EAST KELLOGG BOULEVARD - SAINT PAUL MINNESOTA 55101-1411
PHONE: 651-221-0401 FAX: 651-297-6817
VISIT OUR WEBSITE: WWW.SWBINC.COM

P:\10644 - MPRB - LOI SITE IMPROVEMENTS 06 & 07\LOI - 2007 SITE
IMPROVEMENTS\CORRESPONDENCE\COE PERMIT REVIEW MEMO.DOC

PHOTO ARCHIVE

TOPSOIL AND TURF RENOVATION
North End



South side approaching Channel Bridge



TOPSOIL AND TURF RENOVATION
West Isles



TOPSOIL AND TURF RENOVATION
East Isles Gateway



TOPSOIL AND TURF RENOVATION
West 22nd Street & East Lake of the Isles



TOPSOIL AND TURF RENOVATION
Rocks in Topsoil



TOPSOIL AND TURF RENOVATION
East Isles & Euclid: healthy grass



Shoreline Plantings and Vegetation
Part 1: Plant Height



Shoreline Plantings and Vegetation
Part 1: Plant Height
East Side



West Side



Shoreline Plantings and Vegetation
Part 1: Plant Height
Bi-mower October 2009



Shoreline Plantings and Vegetation
Part 1: Plant Height
After mowing



Shoreline Plantings and Vegetation
Part 1: Plant Height



Shoreline Plantings and Vegetation
Part 2: South Shore Plantings
South shoreline



Shoreline Plantings and Vegetation
Part 2: South Shore Plantings
After burn



Kenilworth Lagoon



Shoreline Plantings and Vegetation
Part 3: Shrub Beds
North Arm at Franklin



Shoreline Plantings and Vegetation
Part 3: Shrub Beds
Russell Avenue



East Side



Shoreline Plantings and Vegetation
Part 3: Shrub Beds
SE Gateway



Kenwood Parkway intersection



Shoreline Plantings and Vegetation
Part 3: Shrub Beds
SE Gateway: wrong Spirea



SE Gateway: missing plants



Shoreline Plantings and Vegetation
Part 3: Shrub Beds
Russell Avenue



East Side



Light Post Styles



Light Post Styles



Tree Wells



Tree Stumps



Benches
Cracked concrete



Grand Rounds Information Kiosk and LOI Interpretive Panel



Benches
Blocked views



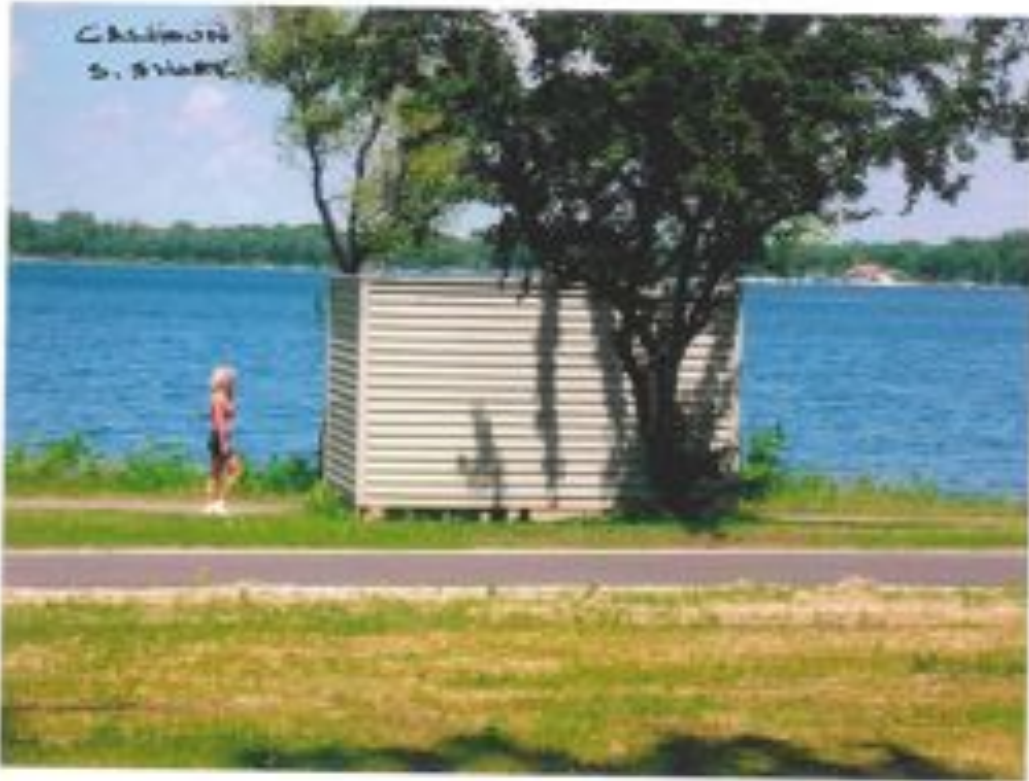
Gateway Intersection at E. Lake of the Isles Parkway & E. Calhoun Parkway
Misplaced "LOI Parkway" and One Way signs



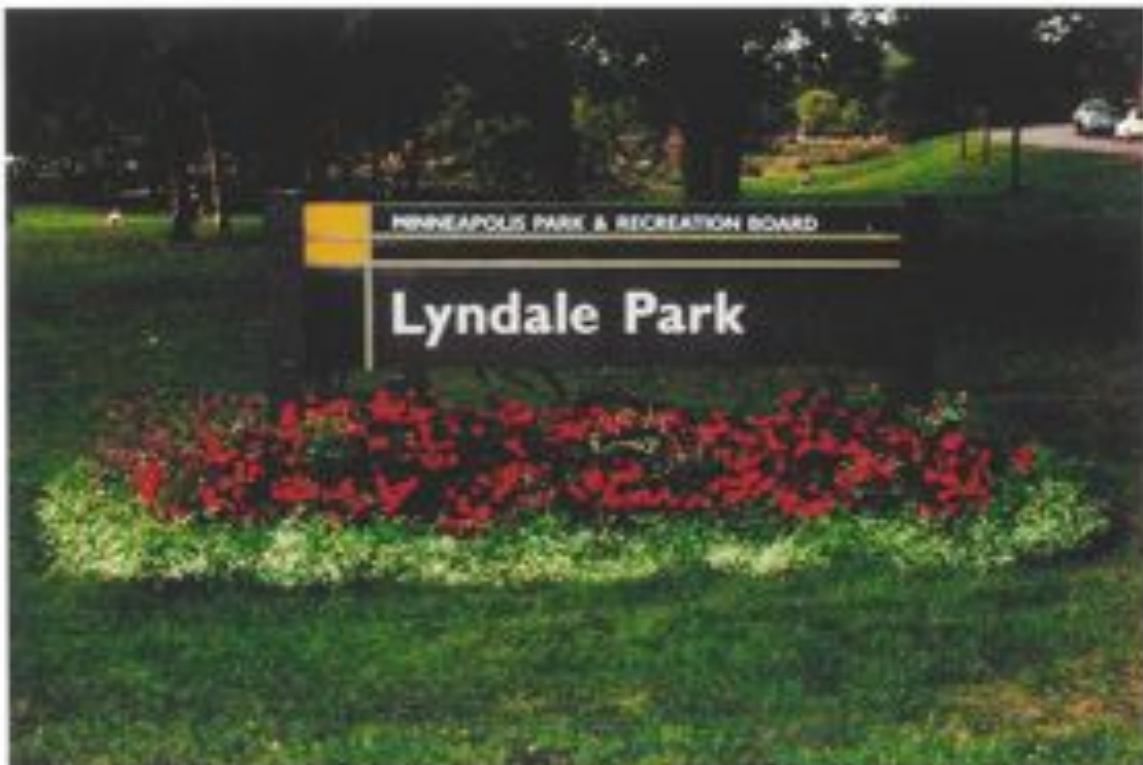
Gateway Intersection at E. Lake of the Isles Parkway & E. Calhoun Parkway
Portable Toilets



Gateway Intersection at E. Lake of the Isles Parkway & E. Calhoun Parkway
Example of screened portable toilet (Lake Calhoun)



Gateway Intersection at E. Lake of the Isles Parkway & E. Calhoun Parkway
Examples of nice MPRB flower beds



Unsightly garbage cans; various garbage bags

